

# CELL BIOLOGY LAB

## Life Processes

Pre-lab Resources

Dr. Lisa Brinn

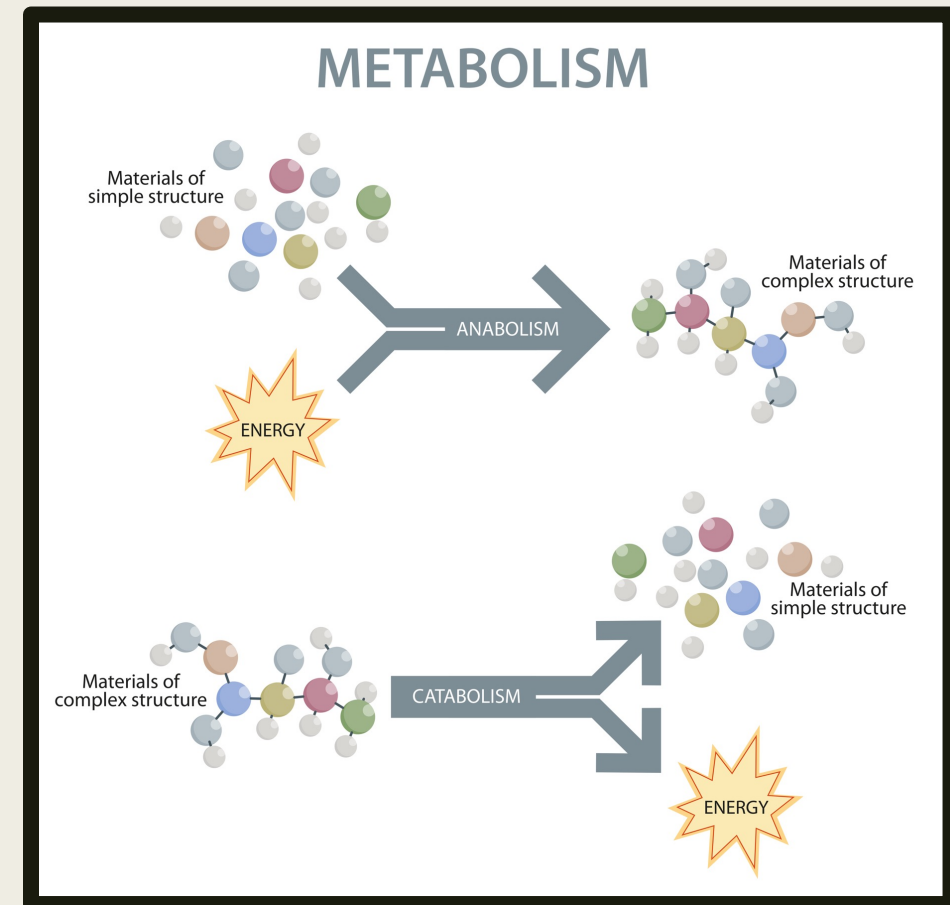


# Life Processes

- a. Metabolism and Excretion
- b. Responsiveness
- c. Movement
- d. Growth
- e. Differentiation
- f. Reproduction

# a. Metabolism and Excretion

- Anabolic reactions
    - *Building reactions*
    - *Consume energy*
  - Catabolic reactions
    - *Break materials down*
    - *Release energy*
  - Normal metabolic operations require:
    - *Absorption*
    - *Excretion*
- Homeostasis



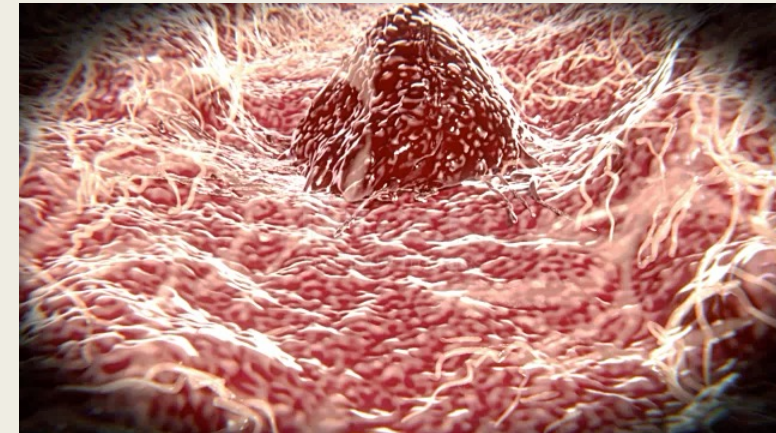
## b. Responsiveness

- Also called irritability
- Adaptability
  - *Longer-lasting changes*



## c. Movement

- Internal
- External



## d. Growth

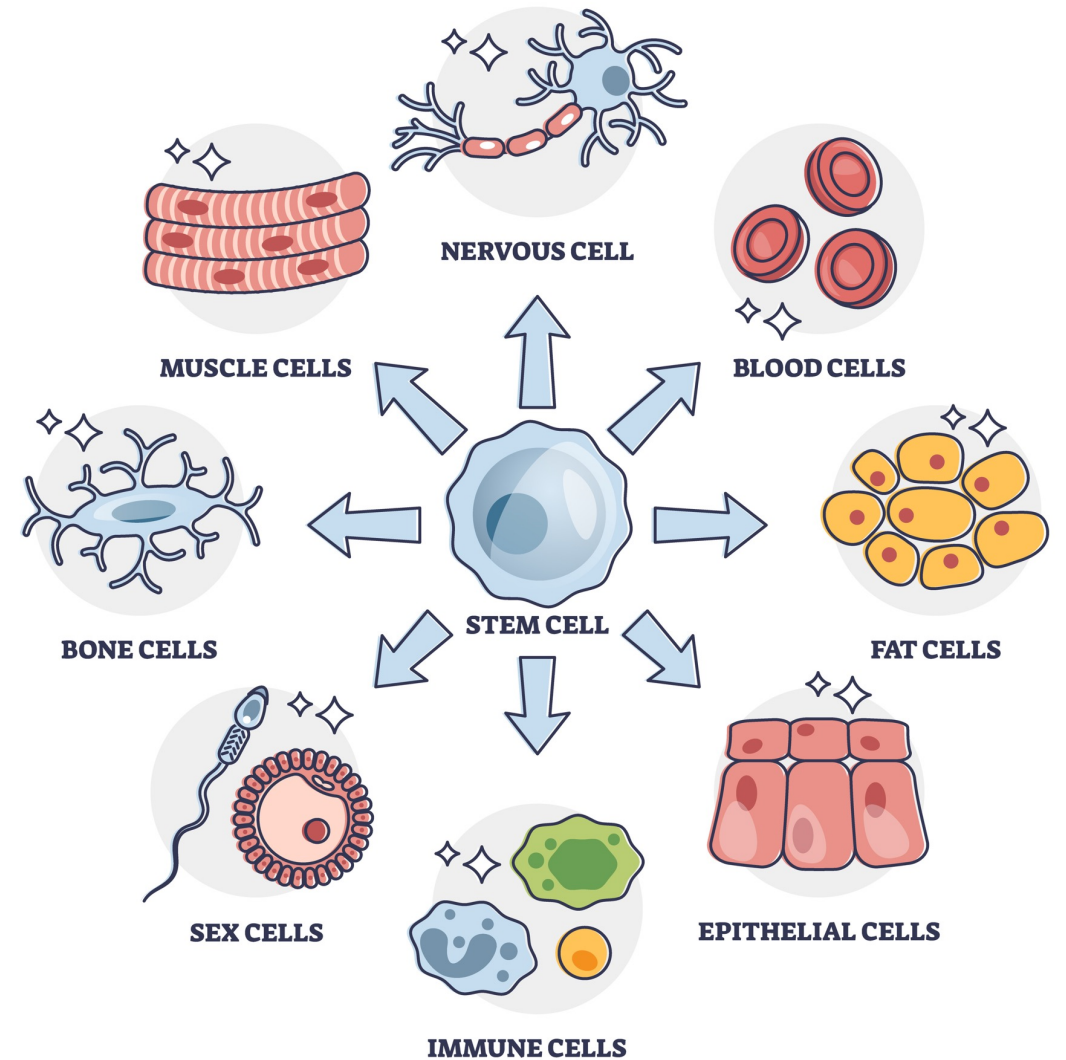
- Increase in:
    - *Size*
    - *Number*
- } Of cells



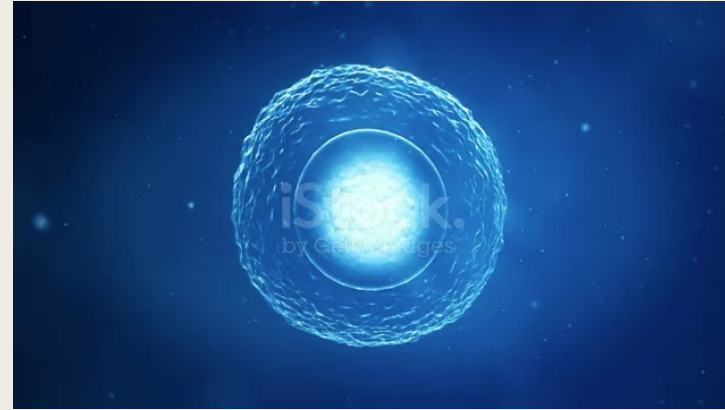


## e. Differentiation

- Perform specialized functions



## f. Reproduction



\*both are animations! Click on them to view

